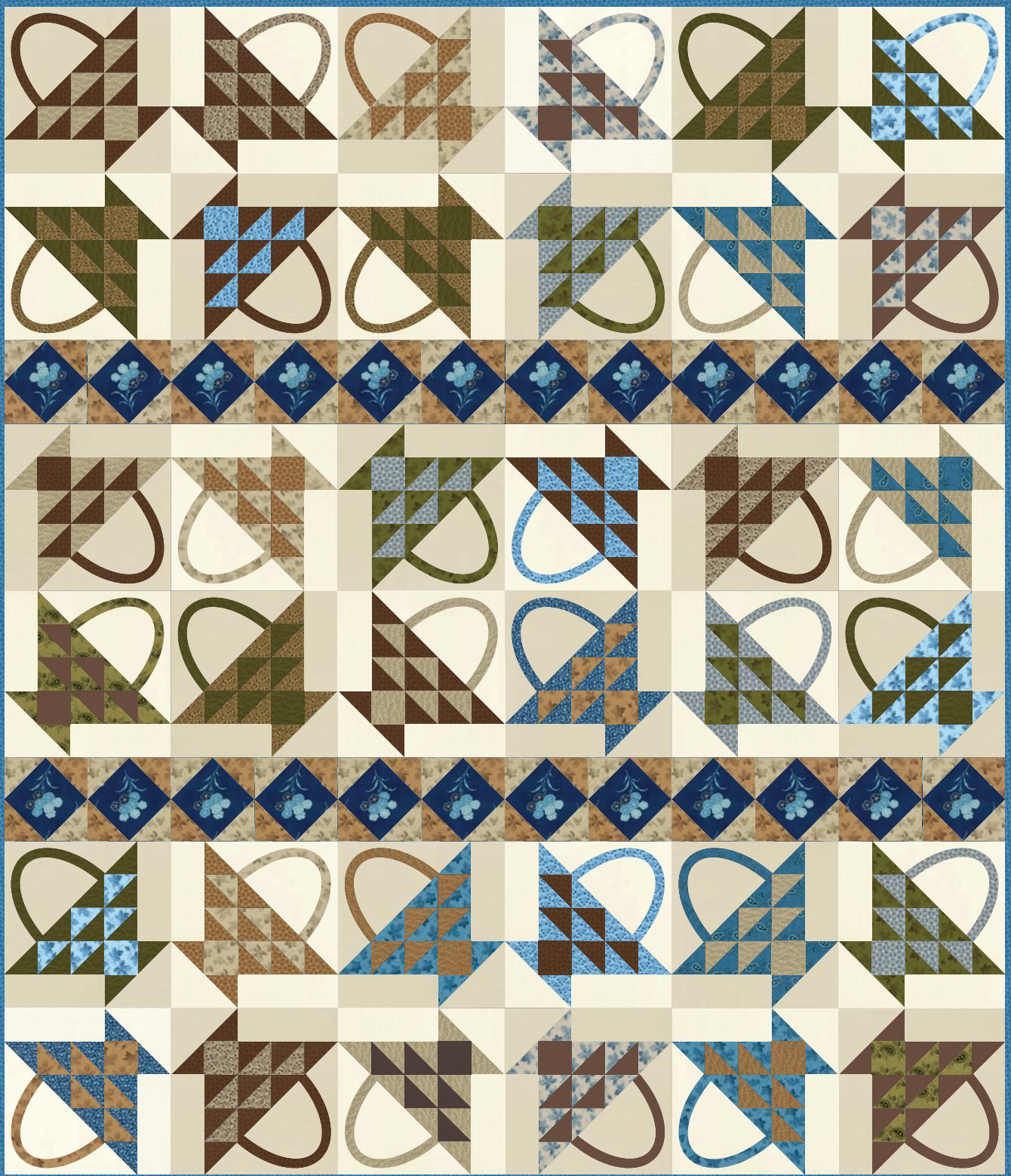


moda



Finished Size: 60" x 70"

BALTIMORE BLUES

Barbara Brackman

BALTIMORE BLUES

Barbara Brackman

Quilters Basics

Finished Size: 60" x 70" Finished Block Size: 10" x 10"

*Read instructions before beginning a project.
All instructions include a 1/4" seam allowance.*

Press as you go. Press seams in one direction

Cutting –Label pieces as they are cut

Fabric 1–Tan "Dark" Background

Cut 3– 9½" x WOF strips

Subcut 12–9½" x 9½" squares for basket handle backgrounds.

Cut 3–6½" x WOF strips

Subcut 48–6½" x 2½" rectangles for basket blocks.

Cut 2–4⅞" x WOF strips

Subcut 12–4⅞" x 4⅞" squares cut once diagonally for basket bottom corner.

Fabric 2– Cream "Light" Background

Cut 3– 9½" x WOF strips

Subcut 12–9½" x 9½" squares for basket handle backgrounds.

Cut 3–6½" x WOF strips

Subcut 48–6½" x 2½" rectangles for basket blocks.

Cut 2–4⅞" x WOF strips

Subcut 12–4⅞" x 4⅞" squares cut once diagonally for basket bottom corner.

Fabric 4

Cut 3– 9" x WOF strips for baskets

Fabrics 7, 11 and 13

From each

Cut 2– 9" x WOF strips for baskets.

Fabrics 8 and 16

From each

Cut 1– 9" x WOF strip for baskets.

Cut 4– 3" x WOF strips

Subcut 48–3" x 3" squares for sashing blocks.

Fabrics 3, 5, 6, 9, 10, 12, 14, 15, 17, 18, 19, 20 and 21

Each fabric is a 9" x WOF strip for baskets

Fabric 22

Set aside. Fabric will be fussy cut later.

Fabric 23 – Binding

Cut 2½" bias strips to equal 285 inches.

Fabrics 3-21

Refer to the chart below and pair the 9" x WOF fabric strips right sides together to make 12 strip pairs. See Cutting Guide on the right.

From each strip pair cut the following. Label pieces as they are cut and keep them layered right sides together.

1 pair – 7" x 16" strips for paper piecing.

1 pair– 9" x 9" squares for basket handles.

6– 2⅞" x 2⅞" squares (6 light and 6 dark) cut once diagonally for baskets

2– 2½" x 2½" squares (2 light and 2 dark) for baskets



APPLIQUÉ

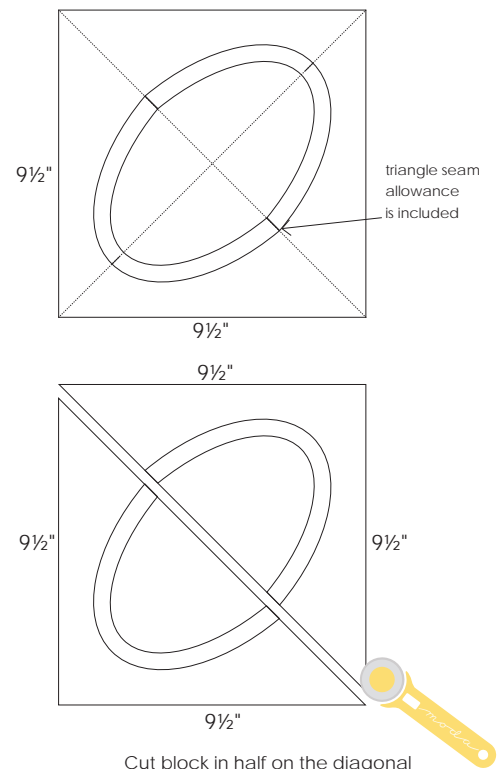
Choose your favorite appliqué method to prepare the 24 basket handle blocks.

Basket Handle Blocks – Make 24

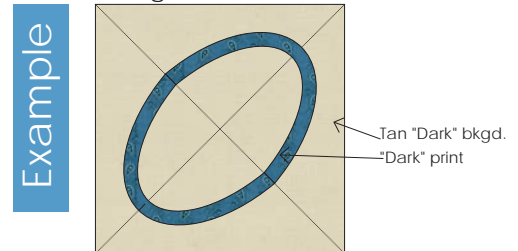
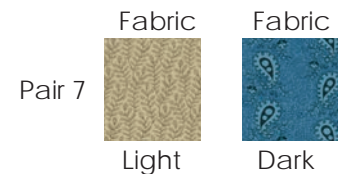
Note: Each handle block will yield 2 basket handle triangles. The triangles are slightly oversized and will be trimmed later after the basket block is assembled.

1. Fold a 9½" x 9½" background square in half diagonally both ways. Lightly press to find the center of the block.
2. Use the pattern on page 4 to make a template. Prepare a handle block from the assorted 9" x 9" print squares. Note: Center seam allowance for both handles is included in the pattern. Pattern **does not** include seam allowance for appliqué.
3. Center a handle using the diagonal lines.
4. Appliqué to the background fabric using your favorite method of appliqué.
5. Using a ruler and rotary cutter, cut the block in half on the diagonal. to yield 2 triangles with basket handles.

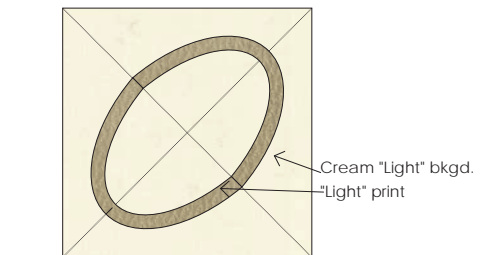
Repeat Steps 1-5 with remaining 9½" x 9½" squares to make a total of 48 basket handles – 24 with Fabric 1 background and 24 with Fabric 2 bkgd. For each Fabric Pair, place the dark handle on the tan (dark) background and place the light handle on the cream (light) background. See example on right.



Cut block in half on the diagonal
Yield: 2 basket handle triangles

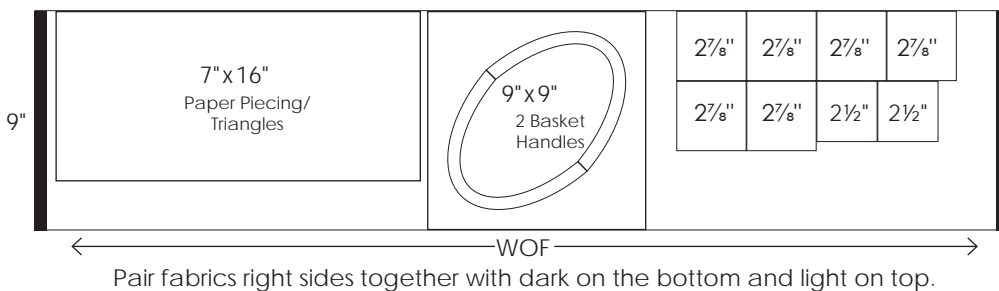


Make 12 using assorted prints



Make 12 using assorted prints

Cutting Guide for Quarter Yard Strip Pairs



Pairs 7 - 12

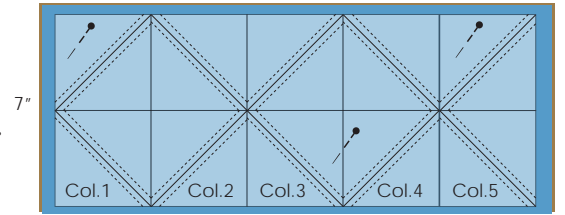


Construction

PAPER PIECING

1. Make sure the light and dark 7"x 16" strip pairs are right sides together.
2. Cut a 5 "column" strip of half square triangle paper.
3. Center and pin paper to the layered pair. *See diagram.*
4. Stitch on dotted lines and cut on solid lines to make 20 half square triangle units. Press toward dark.
5. Repeat Steps 1-4 using the remaining 11 strip pairs to make a total of 240 half square triangle units. (You will need 180; save the extras for a future project or a pieced back for this quilt.)

2" Finished Triangle Paper



16"
7"
Stitch on dotted line and cut on solid lines to make 20 half square triangle units from each of the 12 pairs.

Assemble Basket Blocks – Make 4 from each fabric pair

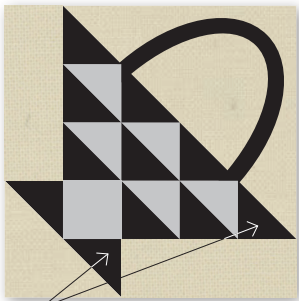
Each Basket Block requires:

- 2 – 2½" x 6½" background rectangles
- 1 – 4⅞" background triangle
- 5 – matching half square triangle units
- 6 – 2⅞" matching triangles
- 1 – 2½" x 2½" matching light or dark square

Square should be the opposite print of the 6 – 2⅞" matching triangles. *Example: if the triangles are dark the square would be light or vice versa.*

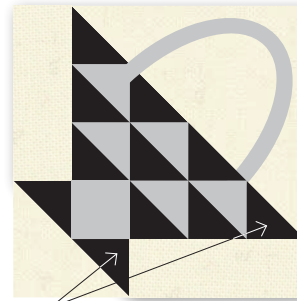
- 1 – basket handle triangle

moda



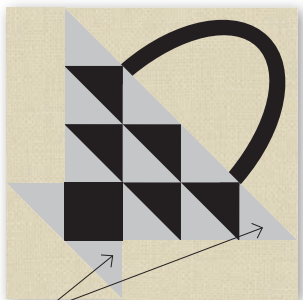
Dark Points-Dark Handle
Dark Background

Make 12



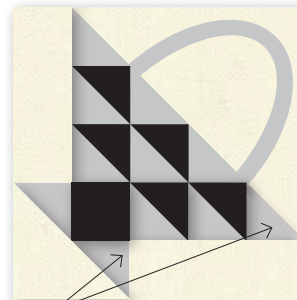
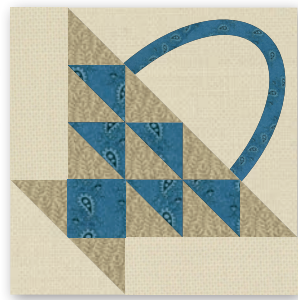
Dark Points-Light Handle
Light Background

Make 12



Light Points-Dark Handle
Dark Background

Make 12



Light Points-Light Handle
Light Background

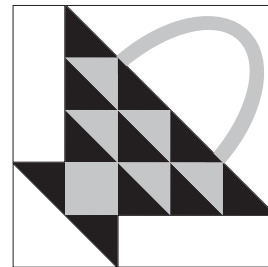
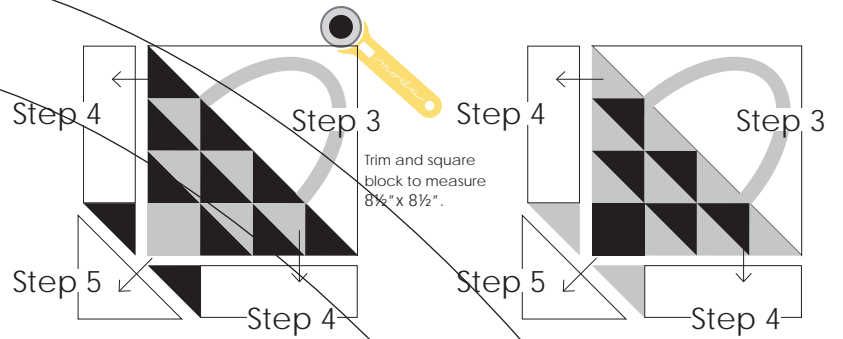
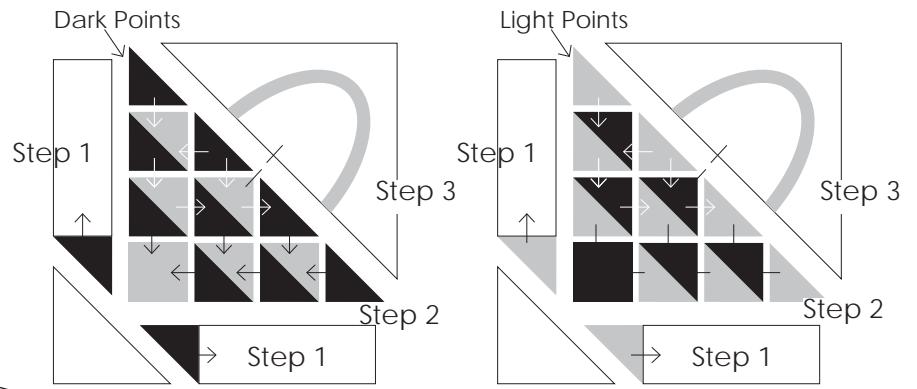
Make 12



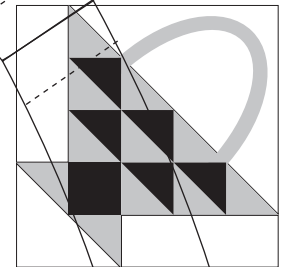
Construction – cont.

To avoid mix ups lay out each block before beginning to piece.

1. Noting direction of triangles, stitch a triangle to the end of the $6\frac{1}{2}'' \times 2\frac{1}{2}''$ rectangles for basket "feet". Press toward rectangles. Set aside.
2. Referring to the diagram for placement and pressing direction, stitch the basket triangles together in horizontal rows. Sew the rows together.
3. Fold basket handle triangle in half and mark the center. Align center with basket center and stitch. Trim and square block to measure $8\frac{1}{2}'' \times 8\frac{1}{2}''$ with seams.
4. Add prepared rectangle/triangle units to opposite sides of pieced basket. Press toward rectangles.
5. Stitch $4\frac{7}{8}''$ background triangle to bottom of basket to complete the block. Basket Block should measure $10\frac{1}{2}'' \times 10\frac{1}{2}''$ with seams.
6. Repeat Steps 1-5 to make 48 Basket Blocks – 24 with dark points and 24 with light points.



Basket block should measure $10\frac{1}{2}'' \times 10\frac{1}{2}''$ with seams.
Make 24 with dark points



Basket block should measure $10\frac{1}{2}'' \times 10\frac{1}{2}''$ with seams.
Make 24 with light points

Handle pattern is 100%.

*Note: Center seam allowance for both handles is included in the pattern. Pattern **does not** include seam allowance for appliqué.*

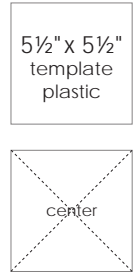
moda

Making the Sashing Blocks



Fussy Cutting the Sashing Fabric

1. Cut a 5½" x 5½" square from the sheet of template plastic. This will be the "window" to fussy cut the flower motif squares for the sashing.
2. Using a fine line marker draw a diagonal line from corner to corner in both directions to mark the center of the 5½" x 5½" template square.
3. Place the center of the template over the flower motif. Then trace around the template using a white Sewline pencil to mark the 5½" x 5½" square.
4. Cut out each marked square using a ruler and rotary cutter.
5. Repeat Steps 3 and 4 to make a total of 24 flower motif blocks for the sashings. *See diagram below.*



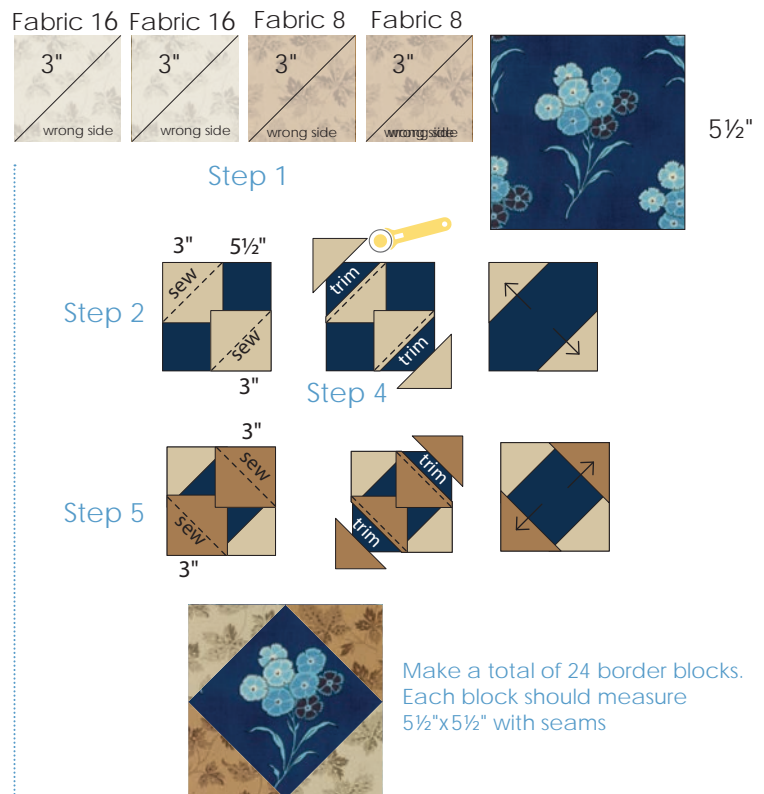
Draw diagonal lines from corner to corner.



Assemble Sashing Blocks

Each border block requires 1 – 5½" flower square and 4–3" corner squares – 2 of Fabric 8 and 2 of Fabric 16. Make a total of 24 blocks. Directions are for one block.

1. Using a mechanical pencil draw a diagonal line on the wrong side of the 4 – 3"x3" squares.
2. With right sides together align edges and pin matching squares in opposite corners of the 5½" square. *Note direction of marked lines.*
3. Stitch on marked lines.
4. Trim away middle layer of fabric leaving a ¼" seam allowance. Press triangle toward corner. Do not cut away background fabric.
5. Repeat with 2 remaining matching squares. Block should measure 5½" x 5½" with seams.

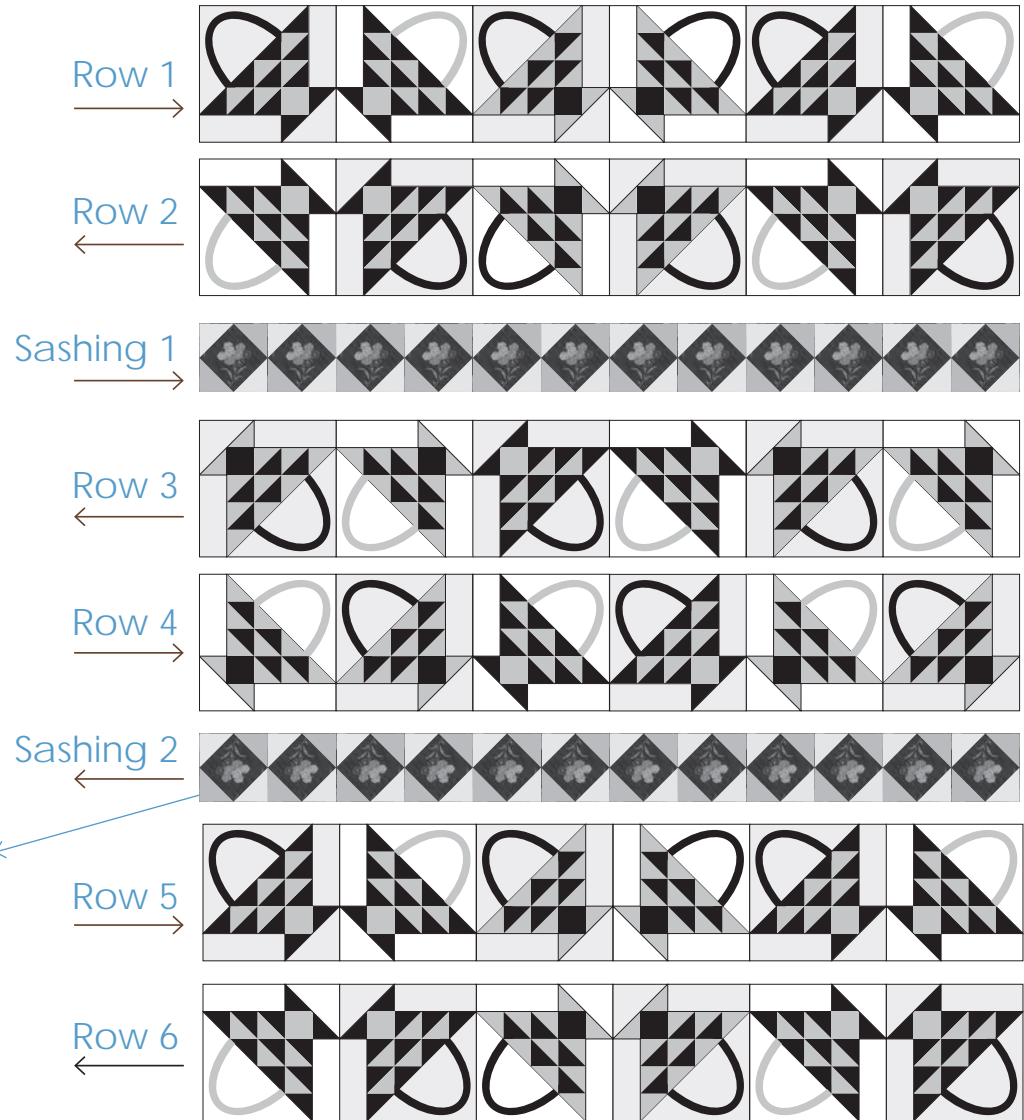


Repeat steps above to make a total of 24 sashing blocks keeping Fabric 8 and Fabric 16 in the same position for each block.

Assemble Quilt

For best color placement arrange quilt blocks on a design wall or the floor before beginning to assemble quilt. Piece three pairs of six blocks alternating dark/light and direction of blocks. See diagram. Press rows toward arrows.

Quilt top should measure 60½" x 70½" with seams.



Note direction of Sashing 2 blocks. By turning blocks upside down the quilt can be used in either direction.

Quilt top should measure 60½" x 70½" with seams.

Finishing

Using a diagonal seam, join the 2½" bias strips end to end. Press seams open. Fold prepared strip in half wrong sides together and gently press to make the binding.

Layer, Quilt and Bind.

moda

BALTIMORE BLUES

Barbara Brackman

Finished Size: 60" x 70" Finished Block Size: 10" x 10"

Fabric Requirements

Fabric 1



Dark
Background
1¾ yards

9900-242

Fabric 7



Baskets
Pairs 3 & 7 Light
⅝ yard

8346-15

Fabric 13



Baskets
Pairs 6 & 12 Dark
⅝ yard

9900-314

Fabric 19



Baskets
Pair 11 Light
¼ yard

8341-12

Fabric 2



Light
Background
1¾ yards

9900-281

Fabric 8



Baskets
Pair 4 Light
Sashing
⅝ yard

8341-19

Fabric 14



Baskets
Pair 7 Dark
¼ yard

8343-12

Fabric 20



Baskets
Pair 11 Dark
¼ yard

8346-18

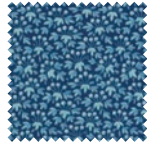
Fabric 3



Baskets
Pair 1 Light
¼ yard

8345-14

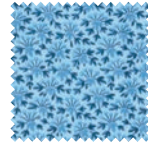
Fabric 9



Baskets
Pair 4 Dark
¼ yard

8345-13

Fabric 15



Baskets
Pair 8 Light
¼ yard

8345-11

Fabric 21



Baskets
Pair 12 Light
¼ yard

8343-21

Fabric 4



Baskets
Pairs 1, 3 and 8
Dark
⅞ yard

8344-17

Fabric 10



Baskets
Pair 6 Light
¼ yard

8341-11

Fabric 16



Baskets
Pair 9 Light
Sashing
⅝ yard

8341-15

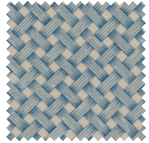
Fabric 22



Sashing
1½ yards

8342-12

Fabric 5



Baskets
Pair 2 Light
¼ yard

8344-14

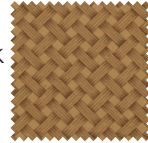
Fabric 11



Baskets
Pairs 5 & 10 Dark
⅝ yard

8346-19

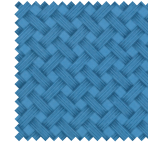
Fabric 17



Baskets
Pair 9 Dark
¼ yard

8344-20

Fabric 23



Binding
⅞ yard

8344-12

Fabric 6



Baskets
Pair 2 Dark
¼ yard

8341-20

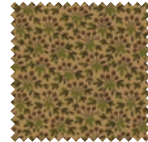
Fabric 12



Baskets
Pair 6 Light
¼ yard

8341-14

Fabric 18



Baskets
Pair 10 Light
¼ yard

8345-19

Backing – 4 yds.
If Pieced Across

Also needed:

Half Square Triangles on a Roll 2" Finished – Stock # H200 or
Laundry Basket Quilt 2" Triangle Papers – Stock # LQB-0222

Template plastic

Optional – 22" fusible web for appliqué – 3½ yds.



MODAFABRICS.COM

PS8340 — SUGGESTED RETAIL \$10.00